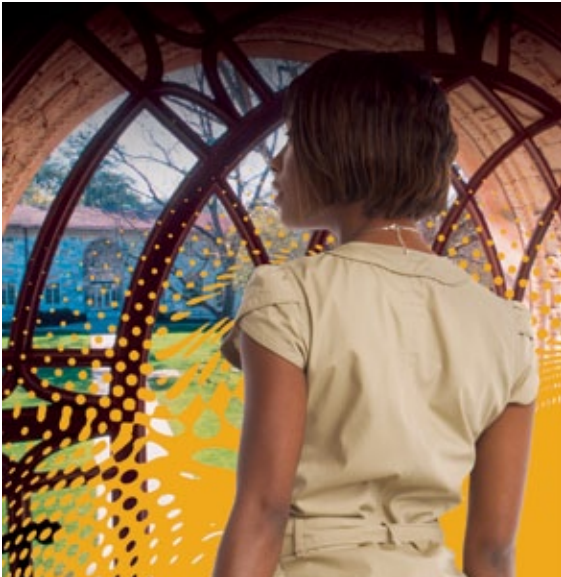


Women's Studies



EMORY
LANEY
GRADUATE
SCHOOL



The Emory Department of Women's Studies supports a generous and pluralistic understanding of scholarly research on women and gender in relation to other aspects of identity, including race, ethnicity, religion, class, disability, nationality, and sexuality.

Emory was the first university to offer the Ph.D. in Women's Studies, establishing its program in 1990. It remains the only WS Ph.D. program supported by a private institution. Our program emphasizes a wide interdisciplinary range of comparative feminist theories and empirical perspectives as well as providing grounding in traditional disciplines.

The Ph.D. program offers flexibility in shaping a student's curriculum and generative mentorship from diverse faculty. Students train in feminist pedagogies and teach within the Department. All students admitted to the Ph.D. program receive full funding for five years. We also offer a graduate certificate in WS for Ph. D. candidates from other programs at Emory.

Program Features

Our departmental strengths and areas of expertise are concentrated in the following four areas:

- Bodies, Sexualities, and Science
- Globalization and Development
- Race, Class, and Justice
- Visual Culture, Narrative, and Ethics

Our faculty members are active researchers in a number of core areas. Faculty research projects and areas of study include:

- Bioethics of health
- Citizenship, political dissent, and political discourse in the U.S.
- Ethical debates in queer and feminist theory
- Feminist disability studies
- Feminist and queer theories of embodiment
- Feminist Science Studies
- Gendered patterns of labor, migration, citizenship
- Histories of transatlantic slavery and emancipation

EXPAND

your thinking

- International human rights regimes and post-conflict justice mechanisms
- Marginalized life narratives
- Political and empirical struggles around the body
- Politics and practices of representation in the U.S.
- Poverty and welfare debates in the U.S.
- Representations of African American women
- Representations of the body
- Transnational communities and processes of immigrant incorporation in the U.S. South
- U.S. and transnational labor markets
- Violence under contemporary neo-liberalism

Students will also find opportunities for collaboration at other centers or entities at Emory. Among them are:

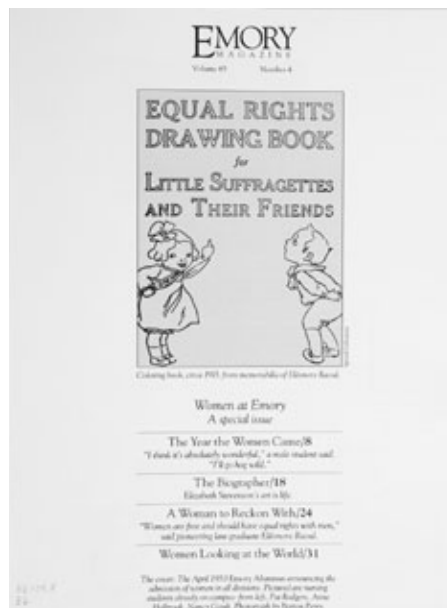
- Emory University's Center on Myth and Ritual in American Life (MARIAL), supported by the Alfred P. Sloan Foundation's Program on Dual-Career Working Middle Class Families, studies the functions and significance of ritual and myth in the American South.
- The Scholarly Inquiry & Research at Emory (SIRE) program offers fellowships with Emory College's Office for Undergraduate Education.
- A number of other graduate programs at Emory offer Graduate Certificates—organized sequences of courses culminating in the award of a certificate, providing systematic interdisciplinary training. Some Women's Studies students obtain certificates in English, Film Studies, Comparative Literature, Psychoanalytic Studies, or Human Rights.



Curriculum

Students are expected to complete a minimum of 60 hours (5 semesters) of graduate course work. The requirements of the program are as follows:

- First Year: Women's Studies Proseminar (WS 700)
Feminist Theory (WS 751R)
Research Assistantship (Spring semester)
- Second Year: Methods requirement
Teaching Women's Studies (WS 720)
One or two semesters of Teaching Assistantship
Choose an advisor and form examination committee
- Third year: Meet final course requirements
Comprehensive exams
(by December 1 of fourth year)
Complete a foreign language requirement
One or two semesters as Teaching Associate (teaching WS 100)
- Fourth Year: Approval of prospectus
(by March 1 of fourth year)
Admission to candidacy
Remaining teaching requirements



Students

The Ph.D. program in Women's Studies typically admits 4 – 6 students per year. The average time to completion of degree is 7 years. In addition, Women's Studies averages 40 students from other departments enrolled in the certificate program at any given time. Completion of the certificate requires 4 courses, including Feminist Theory.

Many of the department's Ph.D. students apply for and receive additional fellowships, including national awards such as grants from the Ford and Mellon Foundations. In addition, students are frequently awarded internal fellowships from such sources as the Writing Center, the Woodruff Library, the Fox Center for Humanistic Inquiry, Southern Studies, and the Dean's Teaching Fellowship. The majority of our students accept faculty positions (more than 80%); others choose jobs in research, nonprofit agencies, and business.

Our students work on a wide range of research and writing, often with strong interdisciplinary components.

Some recent dissertation topics include:

- Mothers in 20th Century Southern Women's Fiction
- The Role of Desire in Contraceptive Use
- Female Ethics and the Project of Democracy
- Sexual Violence and Social Justice in America
- The Role of Privacy in Domestic Violence Law and Activism in the U.S.
- The Female Nude in Modern Visual Culture
- Add the following three to the list:
- Constructions of Literary and Ethnographic Authority
- Power, Gender, and Normalization in Personal Makeover Television Shows
- Freedom, Desire, and Historical Memory in Post-Liberation Era African American Literature

Placements in academic departments and programs include:

- Women's Studies, Syracuse University
- American Studies, Women's and Gender Studies, University of Texas
- Popular Culture, Cinema and English, University of Toronto
- Women's Studies, University of Minnesota
- History & Women's Studies, Purdue University
- Sociology and Anthropology, Berry College
- Film Studies, Hofstra University
- Women's Studies, SUNY Stony Brook
- American Studies Research Programme, Kings College, London
- Philosophy, DePaul University
- English, University of Dayton
- English, University of Wisconsin

Placements in non-academic positions include:

- Research Associate in Contraceptive Technology, Princeton University
- Executive Director, Georgia Coalition Against Domestic Violence
- Executive Director, National Women's Studies Association
- President & Co-Owner, The WOMENTOR Group
- Research Scholar, UCLA Center for the Study of Women

Faculty

The department has 11 core faculty with women's studies expertise in literature, cultural studies, history, sociology, anthropology, political science, and psychology.

We also boast more than 50 associated faculty who work closely with our students as mentors and committee members. Graduate students can draw from associated faculty who represent a wide variety of academic areas, including Law, Public Health, Theology, Nursing, Education, Comparative Literature, The Institute for Liberal Arts, Film Studies, Religion, Anthropology, Art History, The Graduate Division of Religion, Philosophy, Spanish and Portuguese, and Psychology.

Contact Information

<http://www.womensstudies.emory.edu>

CHERYL TREACY-LENDA
Graduate Program Coordinator
Ph: 404.727.0096
Fax: 404.727.4659
Email: womensstudies@emory.edu

Mailing address:
Department of Women's Studies
Emory University
128 Candler Library
550 Asbury Circle
Atlanta, GA 30322



EMORY
L A N E Y
GRADUATE
S C H O O L

Requests for Additional Information:

RECRUITMENT AND ADMISSIONS

James T. Laney School of Graduate Studies
209 Administration Building
201 Dowman Drive
Atlanta, GA 30322

404-727-6028
(ask for the Women's Studies program)
Fax: 404-727-4990

<http://www.graduateschool.emory.edu>
<http://www.womensstudies.emory.edu>